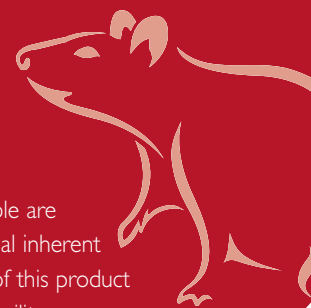


Certified CR 14% Protein Rodent Diet

5CR4*



LabDiet® Certified CR 14% Protein Rodent Diet is formulated by skilled nutritionists under a Managed Formulation process. Managed Formulation results in a Constant Nutrition® diet delivering the very best control for your laboratory animals.

A selection of the highest quality ingredients available are used in manufacturing this product to assure minimal inherent biological variation in long-term studies. A sample of this product will have been assayed prior to shipment to your facility.

FEATURES AND BENEFITS

Managed Formulation = Constant Nutrition® = minimal nutritional variables

Each package is assayed for environmental contaminants prior to shipment

Preanalysis monitoring assures maximum diet control

Certification profile fulfills GLP requirements

Product formulated with 14% protein content according to the breeding of Charles River

This 14% protein formulation is the diet of choice at Charles River's global preclinical facilities

GUARANTEED ANALYSIS

Crude protein not less than.....	14.0%
Crude fat not less than.....	5.0%
Crude fiber not more than.....	5.0%
Ash not more than.....	8.0%

INGREDIENTS

Ground corn, ground wheat, wheat middlings, dehulled soybean meal, fish meal, porcine animal fat preserved with BHA, dehydrated alfalfa meal, cane molasses, calcium carbonate, salt, ground oats, ground soybean hulls, dried beet pulp, wheat germ, dicalcium phosphate, monocalcium phosphate, L-lysine, corn gluten meal, DL-methionine, menadione di-methylpyrimidinol bisulfite, pyridoxine hydrochloride, soybean oil, magnesium oxide, choline chloride, thiamin mononitrate, cholecalciferol, biotin, vitamin A acetate, folic acid, calcium pantothenate, vitamin B-12 supplement, DL-alpha tocopheryl acetate, riboflavin, nicotinic acid, manganous oxide, zinc oxide, ferrous carbonate, copper sulfate, zinc sulfate, calcium iodate, cobalt carbonate, sodium selenite.

PRODUCT FORMS AVAILABLE

- Oval pellet, 10 mm x 16 mm x 25 mm length (3/8" x 5/8" x 1")
- Meal (ground pellets)

FEEDING DIRECTIONS

Provide feeders large enough to hold two to three days supply of Certified CR 14% Protein Rodent Diet at any time. Arrange feeders so that animals cannot contaminate feed with feces. Keep plenty of clean, fresh water available to the animals at all times.





Certified CR 14% Protein Rodent Diet 5CR4*

CHEMICAL COMPOSITION¹

NUTRIENTS²

Protein, %	14.1
Arginine, %	0.74
Cystine, %	0.20
Glycine, %	0.63
Histidine, %	0.33
Isoleucine, %	0.55
Leucine, %	1.04
Lysine, %	0.75
Methionine, %	0.38
Phenylalanine, %	0.58
Tyrosine, %	0.34
Threonine, %	0.46
Tryptophan, %	0.17
Valine, %	0.63
Serine, %	0.69
Aspartic Acid, %	1.09
Glutamic Acid, %	3.81
Alanine, %	0.72
Proline, %	1.38
Taurine, %	0.02
Fat (ether extract), %	5.7
Fat (acid hydrolysis), %	6.6
Cholesterol, ppm	140
Linoleic Acid, %	1.75
Linolenic Acid, %	0.11

Arachidonic Acid, %	<0.1
Omega-3 Fatty Acids, %	0.17
Total Saturated Fatty Acids, %	1.78
Total Monosaturated Fatty Acids, %	1.88
Fiber (Crude), %	4.2
Neutral Detergent Fiber ³ , %	17.5
Acid Detergent Fiber ⁴ , %	5.4
Nitrogen-Free Extract (by difference), %	60.8
Starch, %	41.2
Glucose, %	0.21
Fructose, %	0.23
Sucrose, %	1.20
Lactose, %	0.00
Total Digestible Nutrients, %	77.5
Gross Energy, kcal/gm	4.11
Physiological Fuel Value ⁵ , kcal/gm	3.51
Metabolizable Energy, kcal/gm	3.22

MINERALS

Ash, %	5.1
Calcium, %	0.85
Phosphorus, %	0.60
Phosphorus (non-phytate), %	0.32
Potassium, %	0.67
Magnesium, %	0.22
Sulfur, %	0.21
Sodium, %	0.24
Chlorine, %	0.44
Fluorine, ppm	12
Iron, ppm	210
Zinc, ppm	140
Manganese, ppm	140
Copper, ppm	18
Cobalt, ppm	0.55
Iodine, ppm	1.8
Chromium, ppm	0.53
Selenium, ppm	0.35

VITAMINS

Carotene, ppm	1.0
Vitamin K (as menadione), ppm	3.3
Thiamin Hydrochloride, ppm	30
Riboflavin, ppm	8.0
Niacin, ppm	81
Pantothenic Acid, ppm	24
Choline Chloride, ppm	1200
Folic Acid, ppm	3.5
Pyridoxine, ppm	14
Biotin, ppm	0.30
B ₁₂ , mcg/kg	5.1
Vitamin A, IU/gm	8.0
Vitamin D ₃ (added), IU/gm	1.5
Vitamin E, IU/kg	45
Ascorbic Acid, mg/gm	trace

CALORIES PROVIDED BY:

Protein, %	16.081
Fat (ether extract), %	14.627
Carbohydrates, %	69.293

* PRODUCT CODE

- Based on the latest ingredient analysis information. Since nutrient composition of natural ingredients varies, analysis will differ accordingly.
- Nutrients expressed as percent of ration except where otherwise indicated. Moisture content is assumed to be 10.0% for the purpose of calculations.
- NDF = approximately cellulose, hemicellulose and lignin.
- ADF = approximately cellulose and lignin.
- Physiological Fuel Value (kcal/gm) = Sum of decimal fractions of protein, fat and carbohydrate (use Nitrogen Free Extract) × 4,9,4 kcal/gm respectively.

FOR MORE INFORMATION
VISIT WWW.LABDIET.COM



 **LabDiet**
Your work is worth it.®